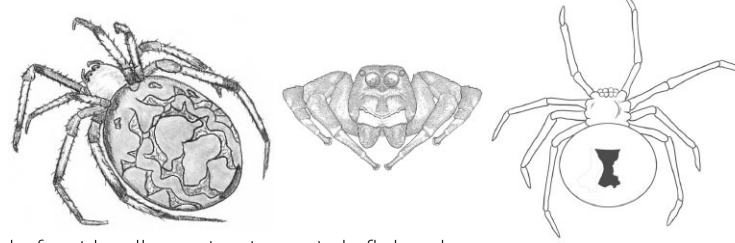


# How to Identify Georgia Spiders

David Boston, eHow Contributing Writer



There are many different types of spiders living in the southern regions of the United States, and some are even native to Georgia. Some of them are poisonous, some of them are harmless and some of them help to keep the number of insect pests living around our houses low. However, if you get a visit from one of these eight-legged guardians, it is important to know how to identify different types of spiders so that we can tell which ones are dangerous and which ones can be calmly moved outside.

## Step 1

Judge how large the spider is by looking at the length of its body and the length of its legs.

## Step 2

Check to see if the spider has a body that is one inch or more in length without including the leg span. If it does, then the spider is most likely a Black and Yellow Garden spider, a Fishing spider, an Orb-Weaving spider, or a Wolf spider. If the spider has a body that is less than one inch long without including the leg span, then you should skip to step 7.

## Step 3 Black and Yellow Garden Spider

Check to see if the leg span of the spider is about two and a half inches long, and look for yellow and black markings with a white area near the head. If your spider fits this description, it is likely to be a Black and Yellow Garden spider. Bites result in only mild itching and swelling for a couple days, though it is believed their bites could inject a very small amount of neurotoxin as well.



BLACK & YELLOW GARDEN

## Step 4 Orb-Weaving Spider

If the spider has a leg span of about an inch and a half long with a very round body, then the spider is most likely an Orb-Weaver Spider. It is easier to tell these spiders apart, because they come in a variety of bright colors, and they weave huge webs up



ORB-WEAVER

to six feet in diameter to catch flying insects outside. Orb-Weavers are non-toxic to humans.

## Step 5

For smaller spiders, do not attempt to measure the leg span. It is much easier to tell these spiders apart by looking for distinct traits or markings. In Georgia, these spiders could be Cellar spiders, Brown Recluse spiders, Trapdoor spiders, Bold Jumping spiders, and Black Widows.

## Step 6 Brown Recluse Spider

Check to see if the spider is brown and smooth with a violin-shaped pattern on its back. If it fits this description, then the spider is most likely a Brown Recluse spider. These spiders are very poisonous, aggressive, and they enjoy hiding in soft places like the arms and legs of clothing, bedding, or pillows more than any other spider in Georgia.



BROWN RECLUSE

## Step 7 Bold Jumping Spider

Look carefully at the spider to see if it is black with a white marking on its back. Also, if the spider is jumping around this is another big sign that the spider you are looking at is a Bold Jumping spider. These spiders are aggressive and spunky, with a bite that hurts but lacks any dangerous poison.



BOLD JUMPING

## Step 8 Black Widow

Look at the coloration of the spider and see if it is black with a red hourglass-shaped pattern on its underbelly. If it is, then it is almost certainly a Black Widow. These spiders have extremely poisonous venom, and commonly hang upside down from their rough, messy webs.



BLACK WIDOW

If none of these steps led you to an identification of the spider, send a picture to a biologist in the area, or contact a poison control center if bitten. ◇